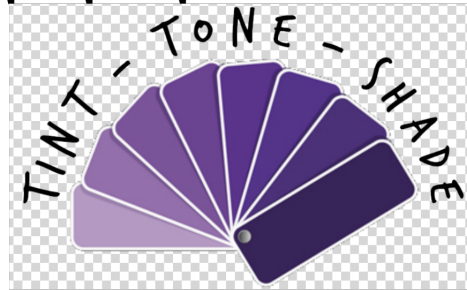


HARMONY

MONOCHROME

color combinations
composed of 1 color
in different tones
also called tone-on-tone

tint - tone - shade



a particular color whose saturated and
unsaturated colors are united



WWW.CREYARTE.BE

CEMY ROELANDT

POWERTEX & MIXED MEDIA
COPY RIGHT PROTECTED