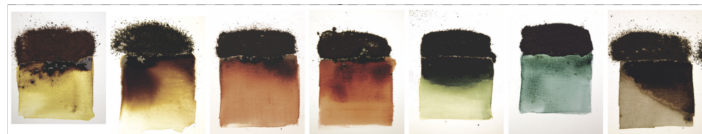
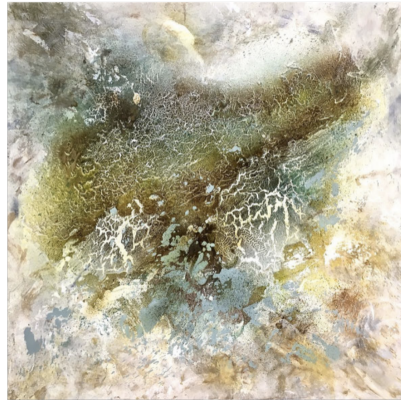


# BISTER WASH

Bister is not water-resistant nor light-fast.  
With a damp sponge, rag or a damp brush  
you can rub/wash away the excess bister.



with the 'bisterwash' technique  
you often get beautiful patina results

=

softer vintage colors



WWW.(REYARTE.BE  
(LEMY ROELANDT

POWERTEX & MIXED MEDIA

365 COLOR DAYS

(COPY RIGHT PROTECTED)